

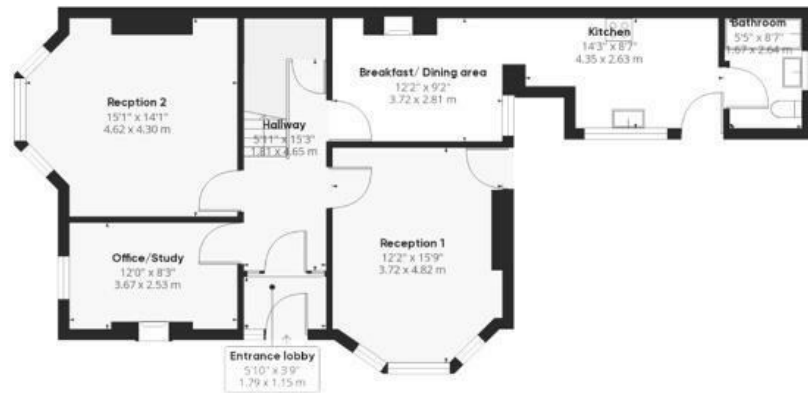
# Filton Avenue

## HORFIELD

APPROXIMATE FLOOR AREA  
176.34 SQM / 1898.1 SQFT



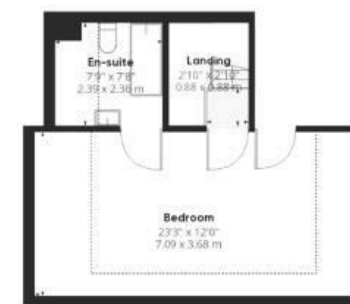
GROUND FLOOR



1ST FLOOR



2ND FLOOR



GARAGE



Illustrations are for reference purposes only, measurements are approximate, not to scale.

**Boardwalk**

# Filton Avenue

HORFIELD, BRISTOL



£550,000



5 Bedrooms



BS7 0AG



3 Bathrooms

*"We have loved the character that comes with our home, and being so close to Gloucester Road. We will miss short walks down to our favourite cafe's for some lunch, and walks around Horfield Common."*

